

Categories of fractions revisited *

Tobias Fritz

Abstract

The theory of categories of fractions, as originally developed by Gabriel and Zisman [1], is reviewed in a pedagogical manner giving detailed proofs of all statements. A weakening of the category of fractions axioms used by Higson [4] is discussed and shown to be equivalent to the original axioms.

2010 Mathematics Subject Classification: 18E35, 18A32.

Keywords and phrases: category of fractions, calculus of fractions, localization.

Contents

1	Introduction	20
1.1	Summary	21
1.2	Notation and terminology	21
2	Localization of categories	21
3	Categories of fractions	23
4	Weakening the requirements	32
5	Additive categories of fractions	34

*This article is a revised version of a part of the author's Master's thesis written at the University of Münster in 2007.

1 Introduction

In category theory, the concept of localization is a tool for constructing a new category from a given one. The idea is as follows: a category may have a certain class of morphisms which are not all invertible, although “morally” they “should” be invertible. As an example, one may consider weak homotopy equivalences in the homotopy category of topological spaces: some weak homotopy equivalences are homotopy equivalences, and hence isomorphisms, but not all of them are [3]; on the other hand, two weakly homotopy equivalent spaces behave in absolutely the same way concerning the properties probed by maps from or to suitably nice spaces, and hence should morally be isomorphic.

Given such a class of morphisms in a category, one can form a localization of the original category, which is a new category which guarantees all “morally invertible” morphisms to be invertible, while approximating the original category as closely as possible. This idea can be made precise in terms of a universal property; see Section 2.

Localizations exist not only for categories, but also for other kinds of algebraic structures. For example for rings: adjoining formal inverses for a certain class of ring elements yields a new ring from a given one. Under certain conditions on the class \mathcal{W} of elements to be inverted—the so-called Ore conditions—there is a particularly nice way to describe the elements of the localized ring in terms of an equivalence class of formal fractions, where a formal fraction is defined to have an element of the original ring in the numerator and an element of \mathcal{W} in the denominator.

It turns out that pretty much the same technique that works for rings can also be applied to categories. Under certain conditions, the localization of a category with respect to a class of morphisms can be described in terms of “formal fractions”. If this construction is possible, the resulting localization is a category of fractions. In some cases, such an abstract construction can be more useful than a concrete (in the category-theoretical sense!) description of the localization. Furthermore, categories of fractions can be relevant for other general categorical constructions; the theory of Verdier localization in the context of triangulated categories is an example.

Due to the metamathematical nature of category theory, the objectives in category theory are quite different from those in ring theory: thinking of a category as representing the collection of models of a mathematical theory, we take the category of fractions as a tool to construct a new mathematical theory from a given one.

1.1 Summary

In Section 2, the concept of localization of a category is introduced and compared with the process of taking a quotient category. Section 3 then gives a detailed account of the category of fraction axioms and their consequences; in particular, all proofs are presented in complete detail. Section 4 goes on to study a weakening of the category of fraction axioms which was originally introduced by Higson [4] in the context of bivariant K -theory of C^* -algebras. It is shown that this weakening is equivalent to the usual set of axioms. This is the only new result of the present work. Finally, Section 5 shows that a category of fractions is additive in case the original category is additive.

1.2 Notation and terminology

In all commutative diagrams, the objects are simply denoted by fat dots “•”. Unless noted otherwise, all diagrams commute. Identity morphisms are pictured as double lines “ \equiv ”. The words “isomorphism” and “monomorphism” are abbreviated respectively as “iso” and “mono”. A split mono is a morphism which has a left inverse; it automatically is a mono. Domain and codomain of a morphism f are written as $\text{dom}(f)$ and $\text{cod}(f)$, respectively.

2 Localization of categories

In some contexts it may happen that we have a category \mathcal{C} which is — in a sense depending on the situation — not well-behaved. For example, it might be that it is too hard to do concrete calculations, or it might be that \mathcal{C} does not have some desired formal property. Then one can try to find a second category $\widehat{\mathcal{C}}$ which has the same objects as \mathcal{C} together with a functor $\mathcal{C} \rightarrow \widehat{\mathcal{C}}$ which is the identity on objects, such that $\widehat{\mathcal{C}}$ is better-behaved and approximates \mathcal{C} in some appropriate sense also depending on the situation. Then instead of working in \mathcal{C} directly, one can transport the morphisms from \mathcal{C} to $\widehat{\mathcal{C}}$ via the functor $\mathcal{C} \rightarrow \widehat{\mathcal{C}}$ and prove theorems about the morphisms in the well-behaved category $\widehat{\mathcal{C}}$. The price one has to pay is that in general some information about the structure of \mathcal{C} is lost on the way.

Now there are at least two concrete ways to make this precise. The first one is the notion of a quotient category. Suppose we are given an equivalence relation \sim on every morphism set $\mathcal{C}(A, B)$ which is preserved

under composition, meaning that

$$(1) \quad (f_1 \sim f_2) \implies (f_1 g \sim f_2 g) \wedge (h f_1 \sim h f_2) \quad \forall f_1, f_2, g, h \in \mathcal{C}$$

whenever these compositions are defined. Then, the composition of equivalence classes is well-defined and defines the quotient category \mathcal{C}/\sim together with the canonical projection functor $\mathcal{C} \rightarrow \mathcal{C}/\sim$. Any kind of homotopy theory serves as a good example.

The second way is a concept called localization. It may be familiar from ring theory. Suppose we are given a category \mathcal{C} and a subclass of morphisms called \mathcal{W} , which “morally” ought to be isos, but in \mathcal{C} not necessarily all of them are; using the letter \mathcal{W} is supposed to suggest a reading like “weak equivalence” [5]. We try to turn all the morphisms in \mathcal{W} into isos by adjoining formal inverses for them. More precisely, we are looking for a category $\widehat{\mathcal{C}} = \mathcal{C}[\mathcal{W}^{-1}]$ equipped with a localization functor $Loc : \mathcal{C} \rightarrow \mathcal{C}[\mathcal{W}^{-1}]$ which has the following universal property:

- (a) $Loc(w)$ is an iso for all $w \in \mathcal{W}$,
- (b) if $F : \mathcal{C} \rightarrow \mathcal{D}$ is any functor which maps \mathcal{W} to isos, then F factors uniquely over Loc as in the diagram

$$(2) \quad \begin{array}{ccc} \mathcal{C} & \xrightarrow{Loc} & \mathcal{C}[\mathcal{W}^{-1}] \\ & \searrow F & \swarrow \exists! \\ & \mathcal{D} & \end{array}$$

In case such a functor exists, the category $\mathcal{C}[\mathcal{W}^{-1}]$ is called the “localization of \mathcal{C} with respect to \mathcal{W} ”. It serves as the desired approximation $\widehat{\mathcal{C}}$ to \mathcal{C} .

Since $\mathcal{C}[\mathcal{W}^{-1}]$ is defined via a universal property, it is certainly unique (up to a unique iso). Proving existence is the nontrivial part.

Theorem 2.1. $\mathcal{C}[\mathcal{W}^{-1}]$ and Loc always exist.

Proof. (from [2, III.2.2] and [1, 1.1]). The category $\mathcal{C}[\mathcal{W}^{-1}]$ can be constructed in two steps: start with the category of paths—call it $\mathcal{P}(\mathcal{C}, \mathcal{W}^{-1})$ —which has as objects the objects of \mathcal{C} , and as morphisms finite strings $\langle l_1, \dots, l_n \rangle$ of composable literals, where a literal l_k is either a morphism of \mathcal{C} (including \mathcal{W}) or a formal inverse of a morphism in \mathcal{W} . Composition of these morphisms is defined as concatenation of strings. For every object $A \in \mathcal{C}$, we also have the empty string $\langle \rangle_A$ which starts

and ends at A and is the identity morphism of A in $\mathcal{P}(\mathcal{C}, \mathcal{W}^{-1})$. This whole definition can be summarized by saying that $\mathcal{P}(\mathcal{C}, \mathcal{W}^{-1})$ is the free category generated by the graph $\mathcal{C} \cup \mathcal{W}^{-1}$.

There is a canonical map $\mathcal{C} \rightarrow \mathcal{P}(\mathcal{C}, \mathcal{W}^{-1})$ which is the identity on objects and maps every morphism $f \in \mathcal{C}$ to the corresponding single-letter string $\langle f \rangle$. This map already has the desired universal property (b). However, neither is this map a functor nor does it map \mathcal{W} to isos. We can easily fix both of these issues by taking a quotient category of $\mathcal{P}(\mathcal{C}, \mathcal{W}^{-1})$ in which these properties are enforced. To this end, we introduce the equivalence relation \sim on strings generated by closure under composition together with the elementary equivalences

- (a) $\langle \rangle_A \sim \langle \text{id}_A \rangle \quad \forall A \in \text{Obj}(\mathcal{C}),$
- (b) $\langle g, f \rangle \sim \langle gf \rangle \quad \forall f, g \in \mathcal{C} \text{ for which the composition } gf \text{ exists,}$
- (c) $\langle w, w^{-1} \rangle \sim \langle \rangle_{\text{cod}(w)}, \quad \langle w^{-1}, w \rangle \sim \langle \rangle_{\text{dom}(w)} \quad \forall w \in \mathcal{W}.$

Then it is clear that the induced map $\text{Loc} : \mathcal{C} \rightarrow \mathcal{P}(\mathcal{C}, \mathcal{W}^{-1})/\sim$ is a functor and maps \mathcal{W} to isos.

As for universality, suppose we are given some functor $F : \mathcal{C} \rightarrow \mathcal{D}$ mapping \mathcal{W} to isos. It induces a unique functor $\mathcal{P}(\mathcal{C}, \mathcal{W}^{-1}) \rightarrow \mathcal{D}$. This functor maps the above elementary equivalences to equalities, thus uniquely factors over the quotient category $\mathcal{P}(\mathcal{C}, \mathcal{W}^{-1})/\sim$. \square

Remark 2.2. (a) For locally small \mathcal{C} , the localization $\mathcal{C}[\mathcal{W}^{-1}]$ need not be locally small. Even under the conditions to be discussed in the next section, it may well happen that the localization has proper classes as the collections of morphisms between some pairs of objects. Showing that this does not happen in a concrete case seems to be a hard problem; one case where local smallness is known is for model categories and localizing with respect to the class of weak equivalences (see [5, p.7 and 1.2.10]).

- (b) The canonical quotient functor $\mathcal{C} \rightarrow \mathcal{C}/\sim$ is full by definition of \mathcal{C}/\sim . However, this is usually not true for a localization functor $\text{Loc} : \mathcal{C} \rightarrow \mathcal{C}[\mathcal{W}^{-1}]$.

3 Categories of fractions

In all diagrams dealing with categories of fractions, a wiggly arrow \rightsquigarrow denotes a morphism in \mathcal{W} , while a straight arrow \longrightarrow is any morphism of \mathcal{C} .

In certain situations, the localization $\mathcal{C}[\mathcal{W}^{-1}]$ can be described much more explicitly, which implies a large gain of control over the structure of this category. We say that $\mathcal{W} \subseteq \mathcal{C}$ allows a calculus of left fractions, if the following conditions are satisfied:

- (L0) \mathcal{W} contains all identity morphisms and is closed under composition. In other words, \mathcal{W} is a subcategory of \mathcal{C} containing all objects.
- (L1) Given any $w \in \mathcal{W}$ and an arbitrary morphism f with $\text{dom}(f) = \text{dom}(w)$, we can find $w' \in \mathcal{W}$ with $\text{dom}(w') = \text{cod}(f)$ and some morphism f' with $\text{cod}(f') = \text{cod}(w')$, such that the diagram

$$\begin{array}{ccc} \bullet & \xrightarrow{w} & \bullet \\ f \downarrow & & \downarrow f' \\ \bullet & \xrightarrow{w'} & \bullet \end{array}$$

commutes.

- (L2) Given $w \in \mathcal{W}$ and parallel morphisms f_1, f_2 such that $f_1 w = f_2 w$, there exists $w' \in \mathcal{W}$ such that $w' f_1 = w' f_2$.

$$\bullet \xrightarrow{w} \bullet \begin{array}{c} \xrightarrow{f_1} \\ \xleftarrow{f_2} \end{array} \bullet \xrightarrow{w'} \bullet$$

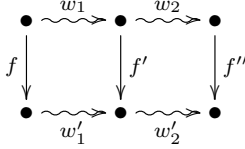
These conditions are exact analogues of the Ore conditions in the theory of (not necessarily commutative) rings [6, p. 3].

Remark 3.1. Condition (L0) is not an essential restriction: if (L1) and (L2) hold for some class of morphisms \mathcal{W} , then both also hold for the \mathcal{C} -subcategory generated by $\mathcal{W} \cup \{\text{id}_A, A \in \text{Obj}(\mathcal{C})\}$. Hence \mathcal{W} can be replaced by this subcategory.

Proof. We assume that \mathcal{W} satisfies (L1) and (L2), but not necessarily (L0). Then $\mathcal{W} \cup \{\text{id}_A, A \in \text{Obj}(\mathcal{C})\}$ certainly also satisfies (L1) and (L2), so it is enough to show that closing \mathcal{W} under composition gives a morphism class $\widehat{\mathcal{W}}$ which also satisfies (L1) and (L2).

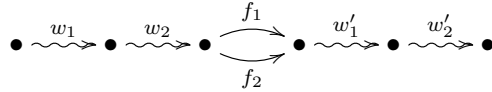
Let $w_1, w_2 \in \mathcal{W}$ be composable to $w = w_2 w_1$. Given any f with $\text{dom}(f) = \text{dom}(w_1)$, two applications of (L1) show that we can find

$w'_1, w'_2 \in \mathcal{W}$ and $f', f'' \in \mathcal{C}$ such that the diagram



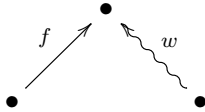
commutes. Now $w' = w'_2 w'_1 \in \widehat{\mathcal{W}}$ and f'' have the required properties with respect to $w = w_2 w_1$ and f . Applying this argument inductively, we get the claim.

Concerning (L2), we similarly consider the situation $f_1 w_2 w_1 = f_2 w_2 w_1$, and obtain



where, thanks to (L2), we could choose w'_1 such that $w'_1 f_1 w_2 = w'_1 f_2 w_2$, and then w'_2 such that $w'_2 w'_1 f_1 = w'_2 w'_1 f_2$, as desired. \square

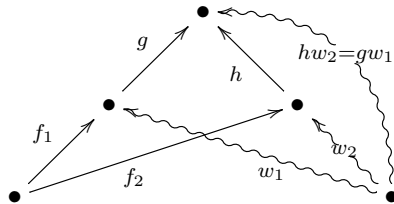
Definition 3.2. A roof (f, w) between two objects $\text{dom}(f)$ and $\text{dom}(w)$ is a diagram of the form



From now on, we assume that $\mathcal{W} \subseteq \mathcal{C}$ satisfies (L0), (L1) and (L2), and derive some consequences from this assumption.

The way to think of a roof (f, w) is as being a formal “left fraction” $w^{-1}f$, defining a formal morphism from the lower left object to the lower right object. Then (L1) intuitively states that it is possible to turn any formal “right fraction” $f w^{-1}$ into a left fraction $w'^{-1}f'$, since $w'f = f'w$ together with invertibility of w and w' implies $f w^{-1} = w'^{-1}f'$.

Definition 3.3. Two roofs (f_1, w_1) and (f_2, w_2) are equivalent if there are morphisms g and h forming a third roof $(gf_1, gw_1) = (hf_2, hw_2)$ as in the diagram

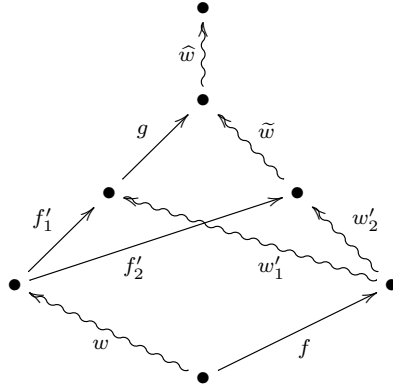


Note that it is not required for g or h to be elements of \mathcal{W} , only the composition $gw_1 = hw_2$ has to be in \mathcal{W} . The equality of $(gf_1, gw_1) = (hf_2, hw_2)$ is expressed by commutativity of the two squares in the diagram.

The goal of this section is to establish that the equivalence classes of roofs form a category under the appropriate composition operation, and that this category is the localization $\mathcal{C}[\mathcal{W}^{-1}]$. This will be done in a sequence of small steps. Intuitively, the first step is to show that the roof (f', w') one obtains from using (L1) to turn a formal right fraction $f w^{-1}$ into a formal left fraction $w'^{-1} f'$ is unique up to equivalence. This will let us define the composition of equivalence classes of roofs later on.

Lemma 3.4. *Any two ways to choose f' and w' in (L1) define equivalent roofs.*

Proof. Imagine two possible choices (f'_1, w'_1) and (f'_2, w'_2) as in the partially commutative diagram

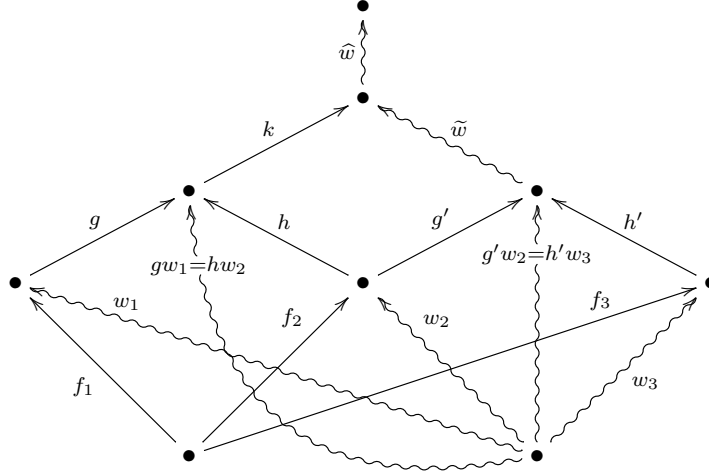


By (L1), g and \tilde{w} were chosen such that $gw'_1 = \tilde{w}w'_2$. This is not yet an equivalence of roofs, since, in general, $gf'_1 \neq \tilde{w}f'_2$. However, we do know that $gf'_1w = \tilde{w}f'_2w$, so by (L2) we can choose \hat{w} such that $\hat{w}gf'_1 = \hat{w}\tilde{w}f'_2$. This makes (f'_1, w'_1) and (f'_2, w'_2) equivalent via $\hat{w}g$ and $\hat{w}\tilde{w}$. \square

Lemma 3.5. *The equivalence of roofs from Definition 3.3 is an equivalence relation.*

Proof. Reflexivity and symmetry are obvious. For transitivity, suppose we are given an equivalence between (f_1, w_1) and (f_2, w_2) , and one be-

tween (f_2, w_2) and (f_3, w_3) , as in the partially commutative diagram



Here, the equivalence between (f_1, w_1) and (f_2, w_2) is assumed to be implemented by g and h , while the one between (f_2, w_2) and (f_3, w_3) is implemented by g' and h' . The commutativity conditions for the two equivalences are

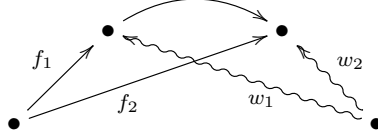
$$(3) \quad gf_1 = hf_2, \quad gw_1 = hw_2; \quad g'f_2 = h'f_3, \quad g'w_2 = h'w_3$$

In the upper part of the diagram, k and \tilde{w} were obtained by applying (L1) to the two wiggly arrows $gw_1 = hw_2$ and $g'w_2 = h'w_3$. The corresponding commutativity assertion of (L1) then is $khw_2 = \tilde{w}g'w_2$. By virtue of (L2), we can then find the drawn \hat{w} such that $\hat{w}kh = \hat{w}\tilde{w}g'$. Together with the relations (3), this means that the compositions $\hat{w}kg$ and $\hat{w}\tilde{w}h'$ of the morphisms which go up along the sides implement an equivalence between (f_1, w_1) and (f_3, w_3) . \square

Under a closer look, the above argument is actually a special case of the argument used to prove Lemma 3.4. In fact, we could also have applied Lemma 3.4 directly to the two roofs (h, hw_2) and $(g', g'w_2)$, since both are (L1)-complements of the formal right fraction $\text{id}_{\text{dom}(w_2)}w_2^{-1}$.

Remark 3.6. We can also take a 2-categorical point of view which gives some more intuitive insight on the notion of equivalence of roofs. We get something resembling a 2-category as follows: on the objects of \mathcal{C} we define a 1-morphism to be a roof in \mathcal{C} with respect to \mathcal{W} . For a roof (f, w) , we define $\text{dom}((f, w)) = \text{dom}(f)$ and $\text{cod}((f, w)) = \text{dom}(w)$. A

2-morphism from a roof (f_1, w_1) to a parallel roof (f_2, w_2) is then defined to be a commutative diagram



The existence of such a 2-morphism makes (f_1, w_1) and (f_2, w_2) equivalent; we call such a 2-morphism an elementary equivalence. A 2-morphism from (f_1, w_1) to (f_2, w_2) can be composed with a 2-morphism from (f_2, w_2) to (f_3, w_3) . This resembles the vertical composition in a 2-category. Now the observation is that two roofs are equivalent if and only if they can be connected by a finite path of 2-morphisms, where each 2-morphism is either traversed from its domain to its codomain or in the reverse direction. To see this, note that the third roof (gf_1, hw_2) in the diagram of Definition 3.3 is connected to each of the other two roofs by a 2-morphism. The other implication direction follows from the transitivity statement of Lemma 3.5 and the fact that two parallel roofs connected by a single 2-morphism are equivalent. Hence Lemma 3.5 can also be reinterpreted as a connectivity statement about the category of parallel roofs between some pair of objects.

In what follows, we will define a (weakly associative) composition of 1-morphisms. A horizontal composition of 2-morphisms does not seem to exist in general, although it seems related to the upcoming proof that the composition of 1-morphisms is well-defined up to equivalence.

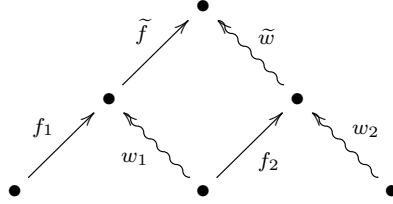
We end this remark by pointing out again that this 2-categorical picture is a non-rigorous intuition.

Lemma 3.4 also allows the definition of composition for equivalence classes of roofs:

Definition 3.7. Given two roofs (f_1, w_1) and (f_2, w_2) which are composable in the sense that $\text{dom}(w_1) = \text{dom}(f_2)$, we define their composition as

$$(f_2, w_2) \circ (f_1, w_1) \equiv (\tilde{f}f_1, \tilde{w}w_2)$$

where \tilde{f} and \tilde{w} in

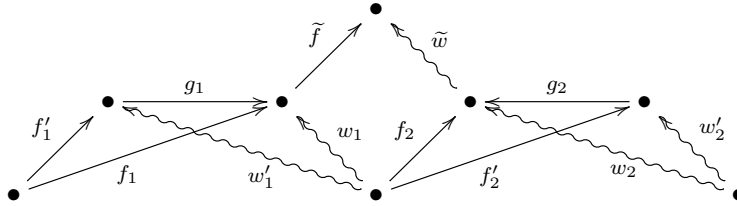


were obtained by means of (L1).

Thanks to lemma 3.4, the equivalence class of (\tilde{f}, \tilde{w}) is unique. Therefore, so is the equivalence class of $(\tilde{f}f_1, \tilde{w}w_2)$.

Lemma 3.8. *This composition does not depend on the equivalence class of either of the two roofs.*

Proof. For both pairs of roofs, it is sufficient to consider the case that they are connected by an elementary equivalence as described in Remark 3.6. Thus suppose we are given the lower half of the diagram

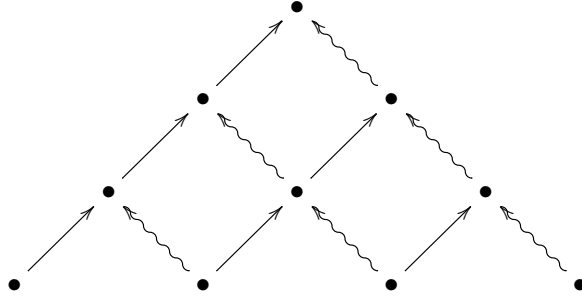


which represents two pairs of elementarily equivalent roofs. After possible renamings $(f_1, w_1) \leftrightarrow (f'_1, w'_1)$ and $(f_2, w_2) \leftrightarrow (f'_2, w'_2)$, we can assume that g_1 goes from $\text{cod}(f'_1)$ to $\text{cod}(f_1)$, while g_2 similarly points from $\text{cod}(f'_2)$ to $\text{cod}(f_2)$.

Applying (L1) to the pair w_1, f_2 yields \tilde{f} and \tilde{w} . Then $(\tilde{f}f_1, \tilde{w}w_2)$ is a possible roof representing the composition $(f_2, w_2) \circ (f_1, w_1)$. Similarly, $(\tilde{f}g_1f'_1, \tilde{w}g_2w'_2)$ is a possible roof representing the composition $(f'_2, w'_2) \circ (f'_1, w'_1)$. By commutativity, these roofs coincide, so in particular they are equivalent. \square

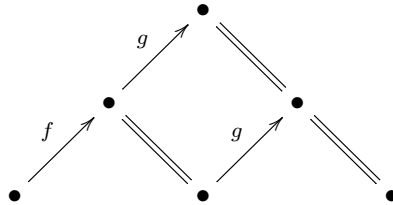
Theorem 3.9. *If $\mathcal{W} \subseteq \mathcal{C}$ admits a calculus of left fractions, then the category $\mathcal{C}[\mathcal{W}^{-1}]$ can be described as the category with the same objects as \mathcal{C} , morphisms equivalence classes of roofs, and composition as defined above. The localization functor $\text{Loc} : \mathcal{C} \rightarrow \mathcal{C}[\mathcal{W}^{-1}]$ is given by $f \mapsto (f, \text{id})$.*

Proof. Associativity of composition follows from the symbolic diagram



where the three lower roofs are those to be composed; the rest of the diagram is obtained by three applications of (L1). Then the large roof from the left to the right formed by composing the morphisms along the sides is a representative for the composition of the three lower roofs in both possible ways of bracketing. This shows associativity. Furthermore, the equivalence classes of the roofs (id, id) obviously play the rôle of identity morphisms. Therefore, taking equivalence classes of roofs as morphisms on $\text{Obj}(\mathcal{C})$ gives a well-defined category $\mathcal{C}[\mathcal{W}^{-1}]$.

Concerning functoriality, Loc preserves identities by definition, and preserves composition by the diagram



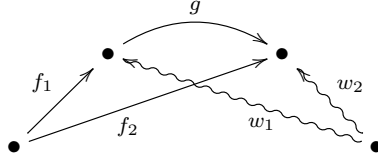
which says that the roof (gf, id) is a representative for the equivalence class of $(g, \text{id}) \circ (f, \text{id})$.

Under Loc , the image of some $w \in \mathcal{W}$ is (w, id) , and this image has as its inverse element the class of (id, w) since (w, w) is a representative of both $(\text{id}, w) \circ (w, \text{id})$ and $(w, \text{id}) \circ (\text{id}, w)$, and there is an obvious equivalence $(w, w) \sim (\text{id}, \text{id})$. In particular, Loc maps \mathcal{W} to isos.

It remains to check universality. Suppose we have some functor $F : \mathcal{C} \rightarrow \mathcal{D}$ which maps \mathcal{W} to isos. First we need to show that F uniquely extends to roofs. By the desired commutativity of (2), any such extension has to map the roof (f, id) to $F(f)$. Similarly, since the class $[(\text{id}, w)]$ is the inverse of the class $[(w, \text{id})]$, any such extension maps

(id, w) to $F(w)^{-1}$. But now (f, w) is a representative of the composition $(\text{id}, w) \circ (f, \text{id})$, so we need $(f, w) \mapsto F(w)^{-1}F(f)$.

We still have to check that this assignment is well-defined on equivalence classes and that it is functorial. Consider an elementary equivalence of roofs as in Remark 3.6,



Then in \mathcal{D} we have $F(w_2) = F(g)F(w_1)$, so $F(w_1)^{-1} = F(w_2)^{-1}F(g)$. Then the calculation

$$(4) \quad F(w_1)^{-1}F(f_1) = F(w_2)^{-1}F(g)F(f_1) = F(w_2)^{-1}F(f_2)$$

shows that the equivalent roofs get mapped to identical morphisms in \mathcal{D} .

Functoriality follows by very similar reasoning. Given a pair of composable roofs together with their composition as in Definition 3.7, it holds that

$$(5) \quad F(\tilde{f})F(w_1) = F(\tilde{w})F(f_2)$$

so that we get

$$(6) \quad F(\tilde{w})^{-1}F(\tilde{f}) = F(f_2)F(w_1)^{-1}$$

Applying first the functor and composing the roofs afterwards yields

$$(7) \quad (F(w_2)^{-1}F(f_2)) \circ (F(w_1)^{-1}F(f_1))$$

while for the other direction we end up with $F(\tilde{w}w_2)^{-1}F(\tilde{f}f_1)$, which coincides with (7) by (6) and functoriality of F . \square

If $\mathcal{W} \subseteq \mathcal{C}$ satisfies (L0) (which is self-dual) and additionally the conditions (R1) and (R2), which are defined to be the category-theoretic duals of (L1) and (L2), then we say that \mathcal{W} allows a calculus of right fractions. In this case, the dual theorem holds: $\mathcal{C}[\mathcal{W}^{-1}]$ can be described in terms of equivalence classes of roofs (w, f) which now represent right fractions fw^{-1} . If all five of the (L*) and (R*) conditions hold, we say that \mathcal{W} admits a calculus of left and right fractions.

4 Weakening the requirements

In [4], a notion of category of fractions is introduced which, on first sight, is seemingly weaker in its premises than the one discussed in the previous section. While keeping (L0) and (L1), the axiom (L2) is replaced by the condition

(L2') Denote by \mathcal{W}_L the class of morphisms in \mathcal{C} generated by \mathcal{W} and all split monos in \mathcal{C} . Then given $w \in \mathcal{W}$ and parallel morphisms f_1, f_2 such that $f_1 w = f_2 w$, there exists $w' \in \mathcal{W}_L$ such that $w' f_1 = w' f_2$.

$$\bullet \overset{w}{\rightsquigarrow} \bullet \begin{array}{c} \xrightarrow{f_1} \\ \xleftarrow{f_2} \end{array} \bullet \overset{w'}{\rightsquigarrow} \bullet$$

Proposition 4.1. *Given $w' \in \mathcal{W}_L$, we can find $k \in \mathcal{C}$ such that $kw' \in \mathcal{W}$.*

Proof. Let us consider the cases how w' might look like, one by one and in increasing order of difficulty. If already $w' \in \mathcal{W}$, we are done since we can take $k = \text{id}_{\text{cod}(w')}$. If $w' = m\hat{w}$, where m is a split mono and $\hat{w} \in \mathcal{W}$, we can take k to be a left-inverse of m , so we are done as well.

The only non-trivial type of situation occurs when w' is a composition of morphisms in \mathcal{W} and split monos such that morphisms of \mathcal{W} come after split monos. The prototype for this situation is a morphism like $w' = \hat{w}m$, with $\hat{w} \in \mathcal{W}$ and m a split mono. By assumption, m has a left inverse e , which means $em = \text{id}$. Now apply (L1) to the pair \hat{w}, e ,

$$\begin{array}{ccc} \bullet & \overset{\hat{w}}{\rightsquigarrow} & \bullet \\ \downarrow m & \begin{array}{c} \downarrow e \\ \rightsquigarrow w' \\ \downarrow k \end{array} & \downarrow k \\ \bullet & \overset{\tilde{w}}{\rightsquigarrow} & \bullet \end{array}$$

which gives the morphism k and some morphism $\tilde{w} \in \mathcal{W}$. The commutativity assertion of (L1) states in this case $\tilde{w}e = k\hat{w}$, so after composing with m on the right we have $\tilde{w} = \tilde{w}em = k\hat{w}m = kw' \in \mathcal{W}$.

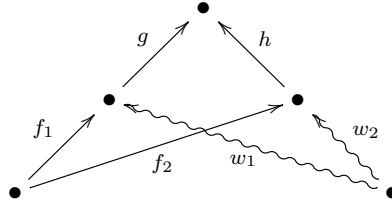
Now for the general case. By definition of \mathcal{W}_L and (L0), our w' is of the form

$$(8) \quad w' = w_n m_n \cdots w_1 m_1$$

where the m_j are split monos and $w_j \in \mathcal{W}$. Starting from the left, we can iteratively apply the previous argument and use (L0) to compose the morphisms in \mathcal{W} to a single morphism in \mathcal{W} , until we have only a single morphism in \mathcal{W} left. \square

Corollary 4.2. (a) Given (L0) and (L1), the assertions (L2) and (L2') are equivalent.

(b) Two roofs (f_1, w_1) and (f_2, w_2) are equivalent if and only if there is a diagram

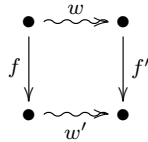


where now we only demand commutativity and $hw_2 \in \mathcal{W}_L$ (instead of $hw_2 \in \mathcal{W}$).

Proof. These are both immediate consequences of the previous proposition. \square

Remark 4.3. As already noticed in [4, 1.2.4], when (L0) holds the axiom (L1) is in fact equivalent to the following variant where $w \in \mathcal{W}_L$:

(L1') Given any $w \in \mathcal{W}_L$ and an arbitrary morphism f with $\text{dom}(f) = \text{dom}(w)$, we can find $w' \in \mathcal{W}$ and some morphism f' with $\text{cod}(f') = \text{cod}(w')$, such that the diagram



commutes.

Clearly, (L1) is trivially implied by this. For the other implication direction, by Remark 3.1 it is sufficient to show that (L1') holds if w is

any split mono as in the diagram

$$\begin{array}{ccc}
 & \xleftarrow{e} & \\
 \bullet & \xrightarrow{w} & \bullet \\
 \downarrow f & & \downarrow fe \\
 \bullet & \xlongequal{\quad} & \bullet
 \end{array}$$

with e some left-inverse of w . Then by (L0) we have $w' \equiv \text{id}_{\text{cod}(f)} \in \mathcal{W}$, so together with $f' \equiv fe$ this does the job; commutativity $few = f$ holds since e is left-inverse to w .

5 Additive categories of fractions

Often, the working mathematician deals with additive categories. In particular, they may want to do localization completely within the framework of additive categories. In other words, given an additive category \mathcal{C} and a class of “moral isomorphisms” \mathcal{W} in \mathcal{C} , is there an additive category $\mathcal{C}[\mathcal{W}^{-1}]$ and an additive localization functor $Loc : \mathcal{C} \rightarrow \mathcal{C}[\mathcal{W}^{-1}]$ which maps \mathcal{W} to isos and is the universal additive functor with this property? And if yes, how can this localization be constructed?

For simplicity, we only consider the case of the category of fractions. Then, in fact, the localization constructed in Theorem 3.9 already is additive. Intuitively, the reason is that one can find a “common denominator” for pairs of roofs representing parallel morphisms in $\mathcal{C}[\mathcal{W}^{-1}]$. The purpose of this section is to turn this intuitive explanation into a formal proof.

In the following, \mathcal{C} is an additive category, and $\mathcal{W} \subseteq \mathcal{C}$ is a class of morphisms satisfying (L0), (L1) and (L2) (or the alternatives (L1') and (L2') discussed in the previous section).

We start by constructing “common denominators” and using them to define an addition operation on equivalence classes of roofs.

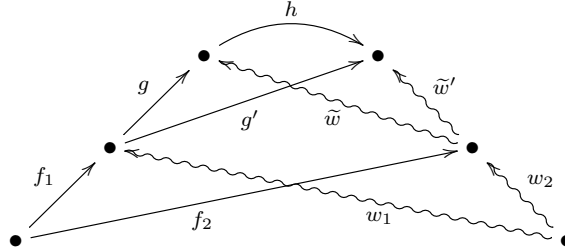
Given parallel roofs (f_1, w_1) and (f_2, w_2) , we apply (L1) to the pair w_1, w_2 and obtain a diagram

$$(9) \quad
 \begin{array}{ccccc}
 & & \bullet & & \\
 & g \nearrow & & \nwarrow \tilde{w} & \\
 & \bullet & & \bullet & \\
 f_1 \nearrow & & & & \nwarrow w_2 \\
 \bullet & \xrightarrow{f_2} & & \xrightarrow{w_1} & \bullet \\
 & & & & \bullet
 \end{array}$$

which commutes only in the sense that $gw_1 = \tilde{w}w_2$. There is an equivalence $(f_1, w_1) \sim (gf_1, \tilde{w}w_2)$, and similarly $(f_2, w_2) \sim (\tilde{w}f_2, \tilde{w}w_2)$. Thus we have identified $\tilde{w}w_2$ as a “common denominator”. Now we can define the sum of (f_1, w_1) and (f_2, w_2) as

$$(10) \quad (f_1, w_1) + (f_2, w_2) \equiv (gf_1 + \tilde{w}f_2, \tilde{w}w_2).$$

It needs to be checked that the class of $(gf_1 + \tilde{w}f_2, \tilde{w}w_2)$ does not depend on the particular choice of g and \tilde{w} . Thanks to Lemma 3.4, the class $[(g, \tilde{w})]$ is well-defined by w_1 and w_2 . Now if (g', \tilde{w}') is another choice connected to (g, \tilde{w}) by an elementary equivalence h , then we have the diagram



which commutes only in the sense that $gw_1 = \tilde{w}w_2$, $g'w_1 = \tilde{w}'w_2$, $hg = g'$ and $h\tilde{w} = \tilde{w}'$. The equation $g'f_1 + \tilde{w}'f_2 = h(gf_1 + \tilde{w}f_2)$ shows that h likewise implements an equivalence

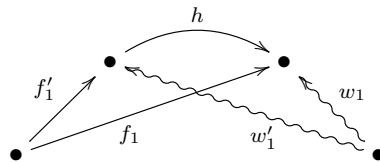
$$(g'f_1 + \tilde{w}'f_2, \tilde{w}'w_2) \sim (gf_1 + \tilde{w}f_2, \tilde{w}w_2),$$

as was to be shown.

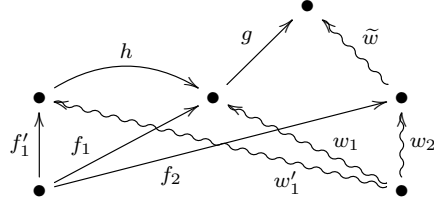
While it has been proven that the definition (10) produces a well-defined class of roofs from every pair of roofs, it is still unclear whether the sum depends on the particular representatives of the summands or only on their classes.

Lemma 5.1. *The class of the sum only depends on the classes of the summands and not on the particular representatives.*

Proof. Still using the same notation, it is sufficient to consider an elementary equivalence between (f_1, w_1) and some (f'_1, w'_1) :



Then taking the common denominator of (f_1, w_1) and (f_2, w_2) as above yields the partially commutative diagram



Now the sum of (f_1, w_1) and (f_2, w_2) is the class of

$$(11) \quad (gf_1 + \tilde{w}f_2, \tilde{w}w_2)$$

while the sum of (f'_1, w'_1) and (f_2, w_2) is the class of

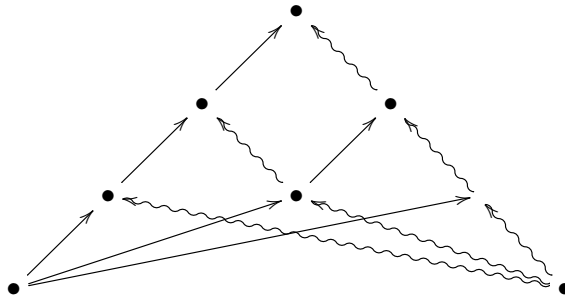
$$(12) \quad (ghf'_1 + \tilde{w}f_2, \tilde{w}w_2)$$

which coincides with (11) by commutativity of the diagram. □

Theorem 5.2. *Suppose \mathcal{C} is additive and allows a calculus of left fractions with respect to \mathcal{W} . Then the category of fractions $\mathcal{C}[\mathcal{W}^{-1}]$ is additive.*

Proof. A category is additive if it is preadditive, has a zero object, and has a biproduct for every pair of objects.

It was already shown how to add equivalence classes of roofs and that this operation is well-defined. Its associativity can be seen from a diagram of the symbolic form



Its commutativity is evident from (9) by realizing that g and \tilde{w} play identical rôles in (9): it is not relevant that $\tilde{w} \in \mathcal{W}$, but only that $\tilde{w}w_2 \in \mathcal{W}$. Neutral elements of the addition operation are given by the

equivalence classes $[(0, \text{id})]$. An additive inverse of $[(f, w)]$ is $[(-f, w)]$. Hence the category of fractions is preadditive.

The localization functor was defined as $Loc : f \mapsto (f, \text{id})$. For parallel morphisms $f, g \in \mathcal{C}$, adding roofs gives $[(f, \text{id})] + [(g, \text{id})] = [(f+g, \text{id})]$; in other words, Loc is additive. In particular, Loc maps biproduct diagrams to biproduct diagrams. Then since the functor is surjective on objects, $\mathcal{C}[\mathcal{W}^{-1}]$ has biproducts. Any null object of \mathcal{C} also is a null object in $\mathcal{C}[\mathcal{W}^{-1}]$. All in all, this makes $\mathcal{C}[\mathcal{W}^{-1}]$ additive. \square

Remark 5.3. In an additive category, we can obviously replace the axiom (L2) by the slightly simpler requirement

(L2'') Given $w \in \mathcal{W}$ and a morphism f such that $fw = 0$, there exists $w' \in \mathcal{W}$ (or $w' \in \mathcal{W}_L$) such that $w'f = 0$.

$$\bullet \overset{w}{\rightsquigarrow} \bullet \xrightarrow{f} \bullet \overset{w'}{\rightsquigarrow} \bullet$$

Tobias Fritz
 ICFO-Institut de Ciències Fòniques,
 Mediterranean Technology Park,
 08860 Castelldefels (Barcelona),
 Spain
 tobias.fritz@icfo.es

References

- [1] Gabriel P.; Zisman M., *Calculus of Fractions and Homotopy Theory*, *Ergebnisse der Mathematik und ihrer Grenzgebiete, Band 35*, Springer-Verlag New York Inc., New York, 1967.
- [2] Gelfand S. I.; Manin Y. I., *Methods of Homological Algebra*, Springer Monographs in Mathematics, Springer-Verlag, Berlin, second edition, 2003.
- [3] Hatcher A., *Algebraic Topology*, Cambridge University Press, Cambridge, 2002.
- [4] Higson N., *Categories of fractions and excision in KK-theory*, *Journal Pure Appl. Algebra* **65** No. 2 (1990), 119–138.
- [5] Hovey M., *Model Categories*, *Mathematical Surveys and Monographs* **63**, American Mathematical Society, Providence, RI, 1999.

- [6] Jategaonkar A. V., Localization in Noetherian Rings, London Mathematical Society Lecture Note Series **98**, Cambridge University Press, Cambridge, 1986.